

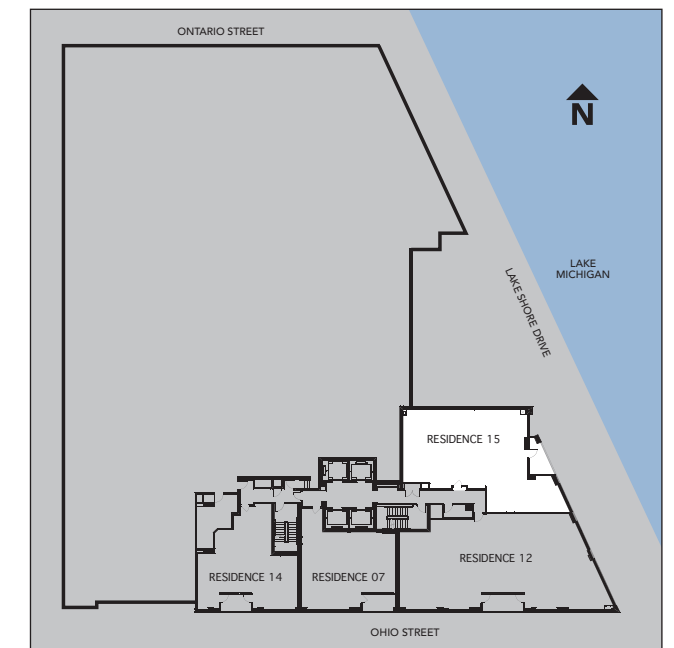
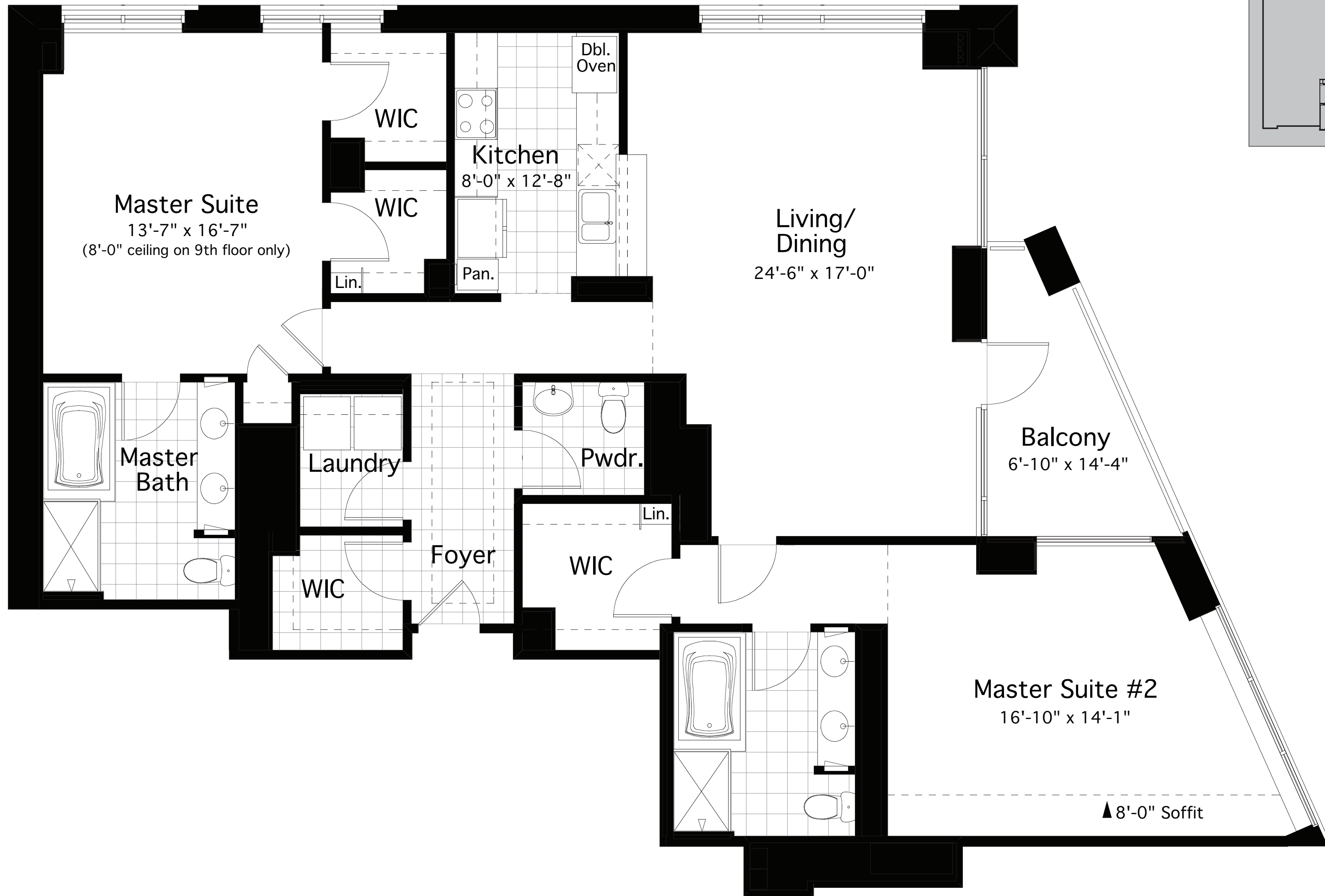
RESIDENCE 15

SOUTH BUILDING

312.832.0060 | 600NorthLakeShoreDrive.com

2 Bedroom, 2.5 Baths

Approximately 1,813 Square Feet
NOT INCLUDING BALCONY



Key plan applies to floors 4-9 only.

Kitchen

Stainless steel appliance package:

Refrigerator/freezer – General Electric™ Profile side-by-side with ice/water dispenser

Oven – General Electric™ Profile built-in self-cleaning single convection oven: Units 02, 03, 07, 09, 10, 14

General Electric™ Profile built-in self-cleaning double oven (one convection): Units 01, 04, 05, 08, 11, 12, 15

Cook-top – General Electric™ Profile 30" gas sealed 4 burner

Dishwasher – General Electric™ Profile with power scrub wash system

Microwave – General Electric™ Profile Spacemaker Plus with built-in recirculating exhaust

Disposal – General Electric™ sound insulated 1/2 HP

3/4" granite countertop with eased edge from developer's standard selections

Wood-Mode™ Brookhaven Cabinetry featuring 42" upper cabinets from developer's standard styles and finishes

Kohler™ stainless steel double bowl undermount sink

Grohe™ chrome pull-out spout faucet

12"x12" porcelain tile floor from developer's standard selections

Master Bath

12"x12" marble from developer's standard selections at floor, shower walls and tub deck and surround

3/4" marble countertop from developer's standard selections

Kohler™ Mariposa soaking tub

Two Kohler™ Caxton undermount sinks

Kohler™ Santa Rosa toilet

Grohe™ lavatory, shower and tub faucets

Shower door – clear tempered glass in polished aluminum frame with glass partition between tub and shower

Wood-Mode™ Brookhaven cabinetry from developer's standard selections featuring heightened vanities

All fixtures are in white; all faucets are in chrome
Some features may not be standard in units 1603 and 1010

Secondary Baths

8"x8" white ceramic tile at floor and tub/shower walls

White solid surface countertop with integral bowl

Kohler™ Villager cast iron tub

Kohler™ Wellworth toilet

Grohe™ lavatory and tub/shower faucets

Wood-Mode™ Brookhaven cabinetry from developer's standard selections featuring heightened vanities

All fixtures are in white; all faucets are in chrome

Powder Room

12"x12" marble flooring from developer's standard selections

Kohler™ pedestal sink

Grohe™ lavatory faucet

Kohler™ Wellworth toilet

All fixtures are in white; all faucets are in chrome

Laundry Room

General Electric™ white on white full-sized side-by-side or stackable washer/dryer, per plan

12"x12" white ceramic tile floor

Interior

9'4" high ceilings in all living areas

12"x12" marble foyer from developer's standard selections

Natural oak hardwood flooring with sound underlayment system in living and dining rooms

Luxury carpet and pad from developer's standard selections in bedrooms and halls

7' high, 1-3/4" stained hardwood entry door

1-3/4" solid core flush swing doors

Lever handle locksets

Recessed lighting in hallways and bathrooms

Light fixture provided in kitchen

Ceiling junction boxes in dining room and entry

Vinyl coated wire shelving in closets

All drywall surfaces shall be spray painted and back rolled in developer's standard white latex flat paint. Doors and trim shall be finished with developer's standard white semi-gloss latex paint

Aluminum windows and doors with insulated glass, thermal break frames and screens

Glass-railed balcony of concrete construction with light fixture and electric outlet

Mechanicals

Year-round individually controlled heating and air conditioning

Futureproof, structured wiring composed of (2) CAT 5 and (2) RG6 homerun cables to every television and telephone outlet

Building Features

Porte cochere entry

Heated indoor parking available

24-hour doorman

Lounge/viewing room

Elegantly appointed lobby and hallways

Sundries/cleaning valet

Business center

Club quality fitness center

Community rooms with full-service kitchens

Private storage

Bicycle storage

Cable-ready system

Full-time resident engineer

Rooftop sun decks

Rooftop sculpture garden